

**REPRINTED TEST REPORT
FROM BAY & DELTA
YACHTSMAN MAGAZINE
FEBRUARY 2006**



42' Sport Trawler 2006



**Available At
Richard Boland Yachts**

1070 Marina Village Pkwy, Ste. 107 - Alameda
(510) 521-6213 - Fax: (510) 521-0118
Cell: (510) 610-6213
www.richardbolandyachts.com

What do you call a motoryacht that has the stability of a trawler, the speed of a cruiser and the cockpit of a convertible? You call it a Sport Trawler. I can't think of a more appropriate name for a motoryacht that features this much versatility. Neither could Barney Fie of Richard Boland Yachts, the man responsible for coining the name for the new 42-ft. Hi-Star.

With traditional "Europa" styling and perfectly proportioned lines, it's difficult to think of this Hi-Star as anything but a trawler. Hi-Star Trawler Yachts and Richard Boland had different ideas in mind for this 42-ft. beauty. Hi-Star started with the classic PT Performance Trawler mold, a very popular hull with the trawler set for the last two decades. Richard added his vision to help create a cruising yacht with the steadiness of a trawler.

Versatile

This Sport trawler isn't just about cruising. A large cockpit, open overhead area, Glendining cockpit controls and ample room for a live bait well enable this Hi-Star to chase the marlin with rest of the pack.

A large hatch located in the cockpit affords easy access to the lazarette. The lazarette houses a very quiet, Northern Lights 8kw generator and a wide door into the engine room. The lazarette also has an abundance of room for extra gear or a watermaker.

Organized

Once inside the organized engine room, I was pleased to see that Hi-Star thought of everything. From stainless steel engine mounts for the Cummins diesels to alloy thru hull fittings with ball valve shutoffs, Hi-Star didn't skimp anywhere. The vast amount of access space to all mechanical components including batteries, strainers and filters will surprise you.

Most impressive are the two 305-gallon fiberglass fuel tanks and the 258-gallon fiberglass auxiliary fuel tank, giving this Sport Trawler an astonishing 868-gallon fuel capacity. Filling this baby may require a second mortgage on your home, but boating enthusiasts will all agree that the opportunity to cruise the waterways on this Hi-Star is well worth the financial investment.

Unique Swim Platform

Another unique element to the Hi-Star is the 40-inch swim platform featuring a "built in" compartmentalized sport box. The sport box is sectioned into three cavernous areas with separate hatches on the swim platform. Weep holes permit



water to drain to the lowest point allowing the sump pump to expel the water. The sport box has a multitude of uses, including miscellaneous gear storage, dive gear, bladder bags for extra fuel capacity and for the fisherman, a fish box.

Also, attached to the swim platform are removable stainless steel rails similar to the rails located on the aft end of many megayachts. These rails not only look great and act as handholds when boarding, they can serve several other purposes. Rod holders, bait prep stations and dinghy davits are just a few of the options that the rails will accommodate.

Time-Honored Look

Inside the large salon, the teak and holly floors contrast beautifully with the high-gloss cherry interior to give the salon a time-honored look. The open and airy feeling is due in part to the 6'10" headroom and the full-sized windows providing plenty of daylight. The salon features amenities such as an electric "pop up" TV cabinet, pull-out sleeper in the settee, icemaker and an abundance of storage. The oval Hi/Lo cocktail table raises itself at the push of a button to transform into a dinette. Also, the engine room is accessible through the salon via removable floor sections.



Located forward of the salon on the same level is a spacious, no-nonsense galley. The galley features generous cabinet space, a microwave/convection oven, a separate refrigerator and freezer, and trash compactor. Hi-Star even included a smooth, black granite counter, which adds a touch of class to this efficient galley.

The pilothouse boasts excellent



visibility, both fore and aft. The sliding pilothouse door, located on the starboard side, provides exceptional access to the walk-around deck. The helm is organized, provides all the necessary gauges, and has sufficient room for several 10-inch screens.

Below, the master stateroom includes a queen-sized bed, cedar-lined closets, 6'9" headroom, and private entry to the single head. The head is roomy with 6'7" headroom and has a single-piece fiberglass shower, vanity with plenty of storage and a Vaccu-Flush® toilet.

Spacious

The guest stateroom features a queen-sized bed and single bunk above. In spite of the bunk, 7'3" headroom provides spaciousness and comfort. The addition of the bunk is just another example of a considerate idea from the folks at Hi-Star.

Entertaining on the full-beam, walk-around flybridge is made easy with a spacious layout, enough seating capacity for eight friends and a refrigerator/freezer combination. There is even room to incorporate a large grill for warm-weather dining. The standard fiberglass radar arch is hinged so it can be brought down for low sheds.

At the helm, the gauges were installed on a flat surface. As a result,

the gauges can be difficult to read without standing directly over them. However, the radar screen is mounted in an easy-to-read position and there is more space for additional screens.

Sweet Spot

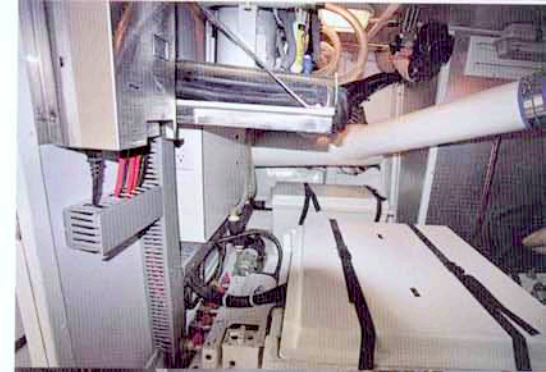
This is no slow boat from China! Equipped with twin 370 hp Cummins Diesels, the 32,000 lb. Sport Trawler achieved a top speed of 19.5 knots at 2800 rpm. The sweet spot seemed to be 15.5 knots at 2400 rpm, but one could cruise comfortably and economically at 13.5 knots while turning 2200 rpm. Unfortunately, fuel burn charts are not yet available so I can't comment on fuel economy. However, with an 868-gallon fuel capacity, I'm certain that this boat could cruise non-stop from San Diego to Cabo San Lucas.

Amazingly, this boat will not pound in less than perfect sea conditions. Regardless of wave direction the Hi-Star was smooth, solid and quiet at all speeds. Throw this boat into hard turns at high speeds and she "leans in," as contrasted with the uncomfortable "lean out" attitude of most trawlers. Handling was exceptional and predictable at any pace.

The Hi-Star's ride comfort can be attributed to the thick, hand-laid solid fiberglass modified V-hull and the lightweight cored super structure. I certainly never experienced the "bobble" effect that I've experienced on many cruisers of lesser quality.

Hi-Star's list of options is endless for this new Sport Trawler. The 42-ft. can be ordered with various power applications including single 370 hp or single 450 hp Cummins. You can also have your choice of a stunning "Flag Blue" hull, or the standard white hull. Whatever your choices, Hi-Star will build a boat to your specific needs.

If you're looking for a quality-built trawler, cruiser or convertible, you can have it all with Hi-Star's new 42-ft. Sport Trawler. **For more information, please contact Richard Boland at Richard Boland Yachts by calling 510/521-6213.** ➤





42' Sport Trawler 2006

SPECIFICATIONS:

LOA..... 48'	Fuel Capacity868 gal
Beam..... 14'2"	Water Capacity200 gal
Draft..... 3'10"	Holding Tank50 gal
Displacement 32,000 lbs	Price As Tested \$475,000



Available At
Richard Boland Yachts

1070 Marina Village Pkwy, Ste. 107 ■ Alameda
(510) 521-6213 ■ Fax: (510) 521-0118
Cell: (510)-610-6213
www.richardbolandyachts.com

Owners Sales and Marketing Program Available